

What is One Simple Decision™?

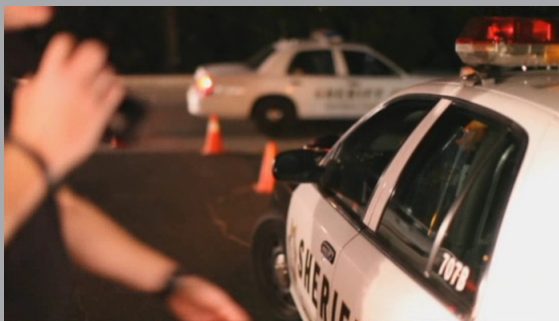
**ONE
SIMPLE
DECISION**



OSD (One Simple Decision™) is a simulation experience created with the direct participation of law enforcement, judicial and trauma personnel and focuses exclusively on the consequences of impaired and distracted driving. The key risks addressed include driving impaired by alcohol, fatigue, or illegal/prescription drugs as well as live distracted driving including texting, cell phone use, peer distractions and other electronics.

OSD is designed to modify driving behavior by illustrating the consequences of choices made behind the wheel. Through the combination of driving simulation, intense interactions and first-person consequence videos, drivers are immersed in an emotional and personal experience that results from "One Simple Decision" they chose to make when driving.

how it works



Real life consequences of poor decisions while driving are seen and felt first hand through OSD. OSD is a reality-based program that details the inevitable consequences associated with each type of driving behavior. The resulting outcome of this unique first hand experience provides a powerful reference for future decision making, ultimately modifying driving behaviors.

why it works

First person experience ... "it's all about ME!"

Live the consequences ... "FEEL the pain of regret"

Real-time texting & driving demo ... "WOW! I really can't drive while texting"

Unique simulations capture & maintain attention ... "it's brief and I GET IT!"

Age appropriate persuasion ... how does this choice affect my:

**future
money
friends
health
freedom**



**VIRTUALDRIVER
INTERACTIVE**

visit www.driverinteractive.com to view a five-minute OSD video

under the hood

One Simple Decision™ is developed using high definition video scenes, thought-provoking questions, and cutting-edge gaming technology. Students are highly engaged while “living through” the risks and consequences of driving distracted or impaired, making OSD a valuable and effective addition to any program.

The menu gives students four simple options:

Free Drive The free drive gives students an opportunity to familiarize themselves with the program.

Distracted Drive While OSD focuses on many driving distractions, the simulated distracted drive focuses specifically on texting while driving. Students are given the choice to use their own phone or an on-screen phone. Either way, the program will engage with the students in a live texting dialogue.

Impaired Drive The sample impairment used in this drive is alcohol, though OSD speaks to many different impairments, including fatigue, medication, drugs, etc.

Reality Check* Reality check is an excellent addition to large group presentations. It speaks to the grim reality of impaired driving, distracted driving, and seat belt use and are presented by actual trauma, law enforcement and judicial personnel.

Additional features provide more “learning moments” for students, while providing customization and data collection options for you:

Consequence Videos* Students are presented with the consequences specific to their outcome. For example, hitting a pedestrian while impaired will have a very different set of consequences than crashing while texting.

IVQs* (In-Video Questions) IVQs are presented to students throughout the consequence videos. While presented in the form of a question, IVQs are designed to further engage students and to generate an internal dialogue about their choices.

Pre- and Post-Drive Survey* OSD has a fully integrated survey platform allowing you to collect data specific to your needs. For example, you may want honest feedback about current driving habits or perhaps feedback on your overall program.

* Consequence videos, reality check videos, IVQs, and surveys may be customized using your experts, questions and messaging.

**VIRTUALDRIVER
INTERACTIVE**
www.driverinteractive.com

visit www.driverinteractive.com to view a five-minute OSD video